



#	Color	Fabric Width	Railroad
2921	White	98" - 118"	Yes
2922	Linen	98" - 118"	Yes
2923	Fawn	98" - 118"	Yes
2924	Champagne	98" - 118"	Yes
2925	Grey	98" - 118"	Yes

<b>Fabric Width</b>	72" - 96" - 108"
<b>Fabric Composition</b>	Vinyl Laminated Fiberglass
<b>Mesh/in</b>	N/A
<b>Weight</b>	12.682 oz./yd. <sup>2</sup> - 430 g/m <sup>2</sup>
<b>Fabric Thickness</b>	± 0.035 mm
<b>Openness Factor</b>	0%
<b>UV Blockage</b>	Approximately 100%
<b>Color Fastness</b>	N/A
<b>Fire Resistance</b>	NFPA701 (USA)

#	Color	Fabric Width	Railroad
7101	Frost	110"	Yes
7102	Egg Shell	110"	Yes
7103	French Vanilla	110"	Yes
7104	Buff	110"	Yes
7105	Earl Gray	110"	Yes
7106	Onyx	110"	Yes

<b>Fabric Width</b>	110"
<b>Fabric Composition</b>	100% Polyester, Acrylic
<b>Mesh/in</b>	N/A
<b>Weight</b>	10.175 oz./yd. <sup>2</sup> - 344 g/m <sup>2</sup>
<b>Fabric Thickness</b>	± 0.018 mm
<b>Openness Factor</b>	0%
<b>UV Blockage</b>	Approximately 100%
<b>Color Fastness</b>	N/A
<b>Fire Resistance</b>	N/A

### Certifications



#### Fire Reaction Certificate

In the case of draperies, curtain, and similar hanging textiles, the standard the applies is NFPA 701: Standard methods of fire tests for flame propagation of textiles and films this test measures the flammability of a fabric when it is exposed to specific sources of ignition.



<b>Transmittance</b>	19
<b>Reflection</b>	66
<b>Absorption</b>	15



**2921 - White**

<b>Transmittance</b>	16
<b>Reflection</b>	59
<b>Absorption</b>	25



**2922 - Linen**

<b>Transmittance</b>	10
<b>Reflection</b>	47
<b>Absorption</b>	43



**2923 - Fawn**

<b>Transmittance</b>	09
<b>Reflection</b>	50
<b>Absorption</b>	41



**2924 - Champagne**

<b>Transmittance</b>	04
<b>Reflection</b>	03
<b>Absorption</b>	93



**2925 - Grey**

<b>Transmittance</b>	02
<b>Reflection</b>	07
<b>Absorption</b>	91



**7101 - Frost**

Fabric color pictured above can vary from printers.  
Please see an actual sample piece for true color.



<b>Transmittance</b>	11
<b>Reflection</b>	75
<b>Absorption</b>	14



**7102 - Eggshell**

<b>Transmittance</b>	06
<b>Reflection</b>	63
<b>Absorption</b>	31



**7103 - French Vanilla**

<b>Transmittance</b>	04
<b>Reflection</b>	55
<b>Absorption</b>	41



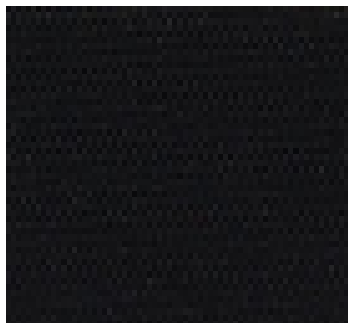
**7104 - Buff**

<b>Transmittance</b>	00
<b>Reflection</b>	07
<b>Absorption</b>	93



**7105 - Earl Gray**

<b>Transmittance</b>	.5
<b>Reflection</b>	28
<b>Absorption</b>	72



**7106 - Onyx**

Fabric color pictured above can vary from printers.  
Please see an actual sample piece for true color.